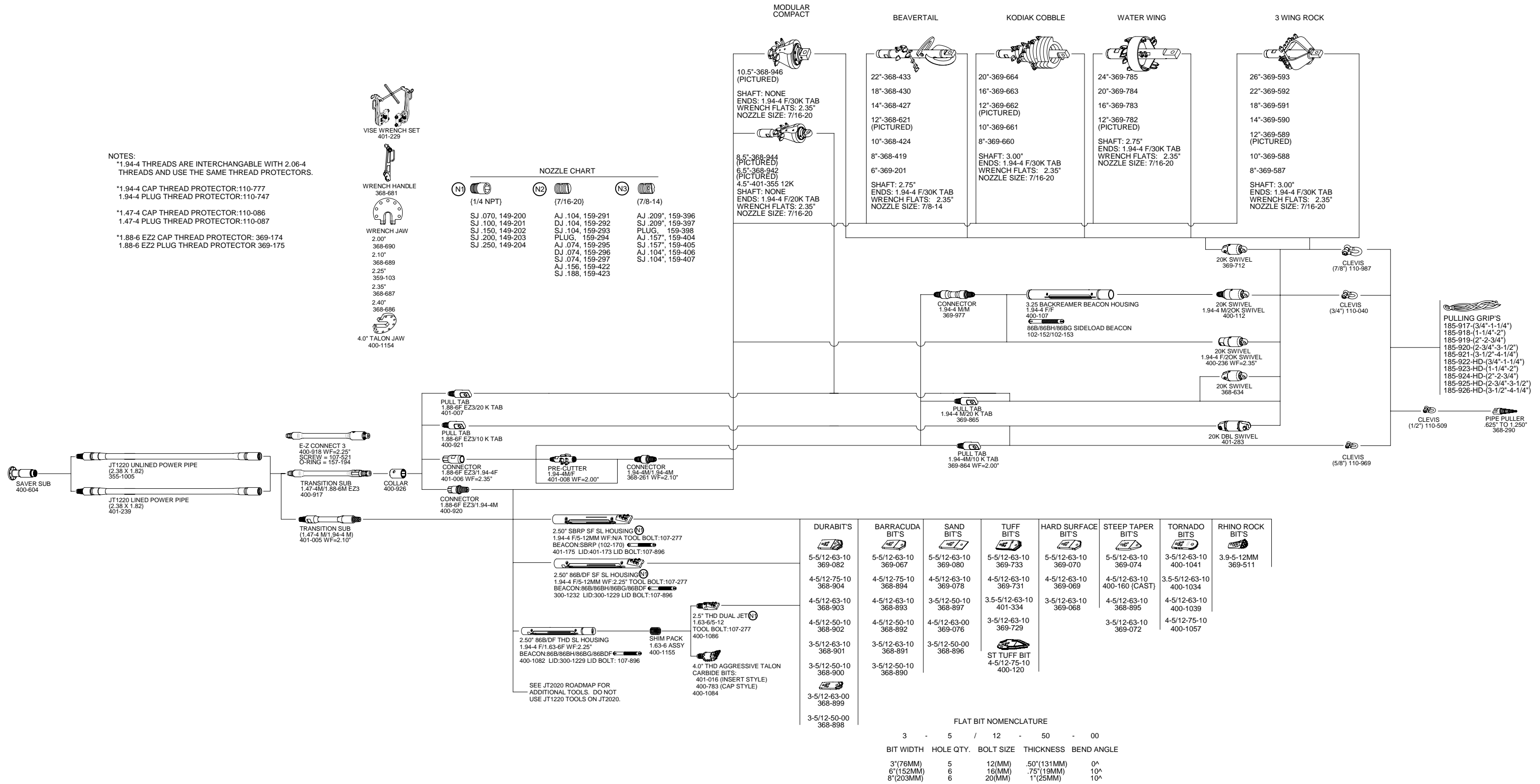


JT1220

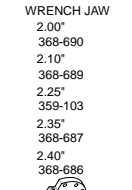


NOTES:
 *1.94-4 THREADS ARE INTERCHANGABLE WITH 2.06-4 THREADS AND USE THE SAME THREAD PROTECTORS.

*1.94-4 CAP THREAD PROTECTOR:110-777
 1.94-4 PLUG THREAD PROTECTOR:110-747

*1.47-4 CAP THREAD PROTECTOR:110-086
 1.47-4 PLUG THREAD PROTECTOR:110-087

*1.88-6 EZ2 CAP THREAD PROTECTOR: 369-174
 1.88-6 EZ2 PLUG THREAD PROTECTOR 369-175



NOZZLE CHART		
N1	N2	N3
{1/4 NPT}	{7/16-20}	{7/8-14}
SJ .070, 149-200	AJ .104, 159-291	AJ .209", 159-396
SJ .100, 149-201	DJ .104, 159-292	SJ .209", 159-397
SJ .150, 149-202	SJ .104, 159-293	PLUG, 159-398
SJ .200, 149-203	PLUG, 159-294	AJ .157", 159-404
SJ .250, 149-204	AJ .074, 159-295	SJ .157", 159-405
	DJ .074, 159-296	AJ .104", 159-406
	SJ .074, 159-297	SJ .104", 159-407
	AJ .156, 159-422	
	SJ .188, 159-423	

- PULLING GRIPS**
 185-917-(3/4"-1-1/4")
 185-918-(1-1/4"-2")
 185-919-(2"-2-3/4")
 185-920-(2-3/4"-3-1/2")
 185-921-(3-1/2"-4-1/4")
 185-922-HD-(3/4"-1-1/4")
 185-923-HD-(1-1/4"-2")
 185-924-HD-(2"-2-3/4")
 185-925-HD-(2-3/4"-3-1/2")
 185-926-HD-(3-1/2"-4-1/4")

DURABITS	BARRACUDA BITS	SAND BITS	TUFF BITS	HARD SURFACE BITS	STEEP TAPER BITS	TORNADO BITS	RHINO ROCK BITS
5-5/12-63-10 369-082	5-5/12-63-10 369-067	5-5/12-63-10 369-080	5-5/12-63-10 369-733	5-5/12-63-10 369-070	5-5/12-63-10 369-074	3-5/12-63-10 400-1041	3.9-5-12MM 369-511
4-5/12-75-10 368-904	4-5/12-75-10 368-894	4-5/12-63-10 369-078	4-5/12-63-10 369-731	4-5/12-63-10 369-069	4-5/12-63-10 400-160 (CAST)	3-5/12-63-10 400-1034	
4-5/12-63-10 368-903	4-5/12-63-10 368-893	3-5/12-50-10 368-897	3-5/12-63-10 401-334	3-5/12-63-10 369-068	4-5/12-63-10 368-895	4-5/12-63-10 400-1039	
4-5/12-50-10 368-902	4-5/12-50-10 368-892	4-5/12-63-00 369-076	3-5/12-63-10 369-729		3-5/12-63-10 369-072	4-5/12-75-10 400-1057	
3-5/12-63-10 368-901	3-5/12-63-10 368-891	3-5/12-50-00 368-896	ST TUFF BIT 4-5/12-75-10 400-120				
3-5/12-50-10 368-900	3-5/12-50-10 368-890						
3-5/12-63-00 368-899							
3-5/12-50-00 368-898							

FLAT BIT NOMENCLATURE

BIT WIDTH	HOLE QTY.	BOLT SIZE	THICKNESS	BEND ANGLE
3"(76MM)	5	12(MM)	.50"(131MM)	0°
6"(152MM)	6	16(MM)	.75"(19MM)	10°
8"(203MM)	6	20(MM)	1"(25MM)	10°

SEE JT2020 ROADMAP FOR ADDITIONAL TOOLS. DO NOT USE JT1220 TOOLS ON JT2020.