

JT2020

NOTES:
 *1.94-4 THREADS ARE INTERCHANGABLE WITH 2.06-4 THREADS AND USE THE SAME THREAD PROTECTORS.

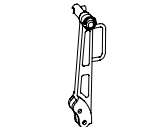
*1.94-4 CAP THREAD PROTECTOR:110-777
 1.94-4 PLUG THREAD PROTECTOR:110-747

*2.59-4 CAP THREAD PROTECTOR:110-904
 2.59-4 PLUG THREAD PROTECTOR:110-905

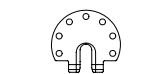
*2.00-6 EZZ CAP THREAD PROTECTOR: 369-271
 2.00-6 EZZ PLUG THREAD PROTECTOR 369-272



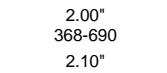
WISE WRENCH SET
401-229



WRENCH HANDLE
368-681



WRENCH JAW



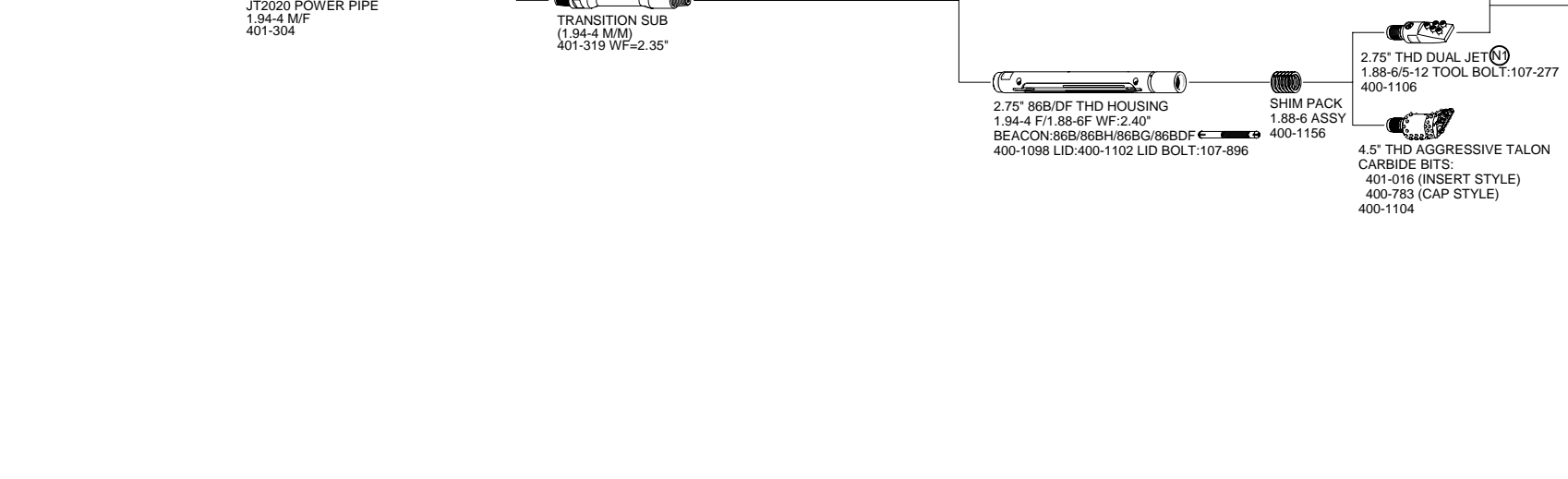
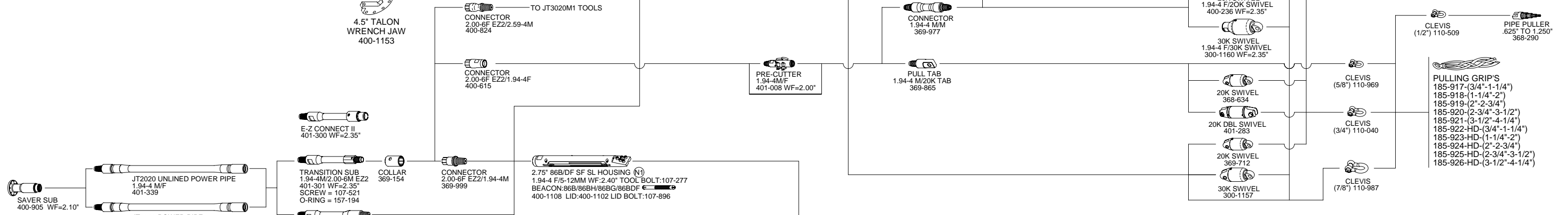
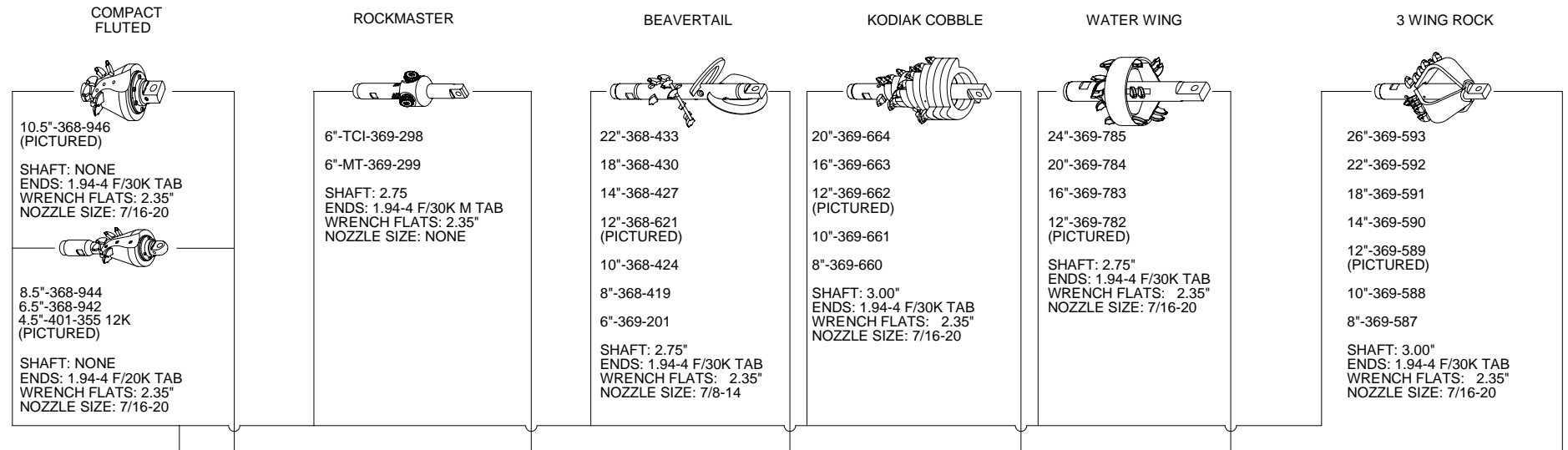
4.5" TALON WRENCH JAW
400-1153

NOZZLE CHART

N1	N2	N3
{1/4 NPT}	{7/16-20}	{7/8-14}
SJ .070, 149-200	AJ .104, 159-291	AJ .209", 159-396
SJ .100, 149-201	DJ .104, 159-292	SJ .209", 159-397
SJ .150, 149-202	SJ .104, 159-293	PLUG, 159-398
SJ .200, 149-203	PLUG, 159-294	AJ .157", 159-404
SJ .250, 149-204	AJ .074, 159-295	SJ .157", 159-405
	DJ .074, 159-296	AJ .104", 159-406
	SJ .074, 159-297	SJ .104", 159-407
	AJ .156, 159-422	
	SJ .188, 159-423	



4.5" TALON WRENCH JAW
400-1153



DURABITS	BARRACUDA BITS	SAND BITS	TUFF BITS	TORNADO BITS	HARD SURFACE BITS	STEEP TAPER BITS	RHINO ROCK BITS
5-5/12-63-10 369-082	5-5/12-63-10 369-067	5-5/12-63-10 369-080	5-5/12-63-10 369-733	3-5/12-63-10 400-1041	5-5/12-63-10 369-070	5-5/12-63-10 369-074	3.9-5-12MM 369-511
4-5/12-75-10 368-904	4-5/12-75-10 368-894	4-5/12-63-10 369-078	4-5/12-63-10 369-731	3.5-5/12-63-10 400-1034	4-5/12-63-10 369-069	4-5/12-63-10 400-160 (CAST)	
4-5/12-63-10 368-903	4-5/12-63-10 368-893	3-5/12-50-10 368-897	3.5-5/12-63-10 401-334	4-5/12-63-10 400-1039	3-5/12-63-10 369-068	4-5/12-63-10 368-895	
4-5/12-50-10 368-902	4-5/12-50-10 368-892	4-5/12-63-00 369-076	3-5/12-63-10 369-729	4-5/12-75-10 400-1057		3-5/12-63-10 369-072	
3-5/12-63-10 368-901	3-5/12-63-10 368-891	3-5/12-50-00 368-896	ST TUFF BIT 4-5/12-75-10 400-120				
3-5/12-50-10 368-900	3-5/12-50-10 368-890						
3-5/12-63-00 368-899							
3-5/12-50-00 368-898							

FLAT BIT NOMENCLATURE
 3 - 5 / 12 - 50 - 00
 BIT WIDTH HOLE QTY. BOLT SIZE THICKNESS BEND ANGLE
 3"(76MM) 5 12(MM) .50"(131MM) 0°
 6"(152MM) 6 16(MM) .75"(19MM) 10°
 8"(203MM) 6 20(MM) 1"(25MM) 10°