

JT4020 MACH 1

NOTES:

ALL BACKREAMERS HAVE 2.59-4 FM THDS TO 40K MALE PULL SOCKET EXCEPT THE 5.75" ROCKMASTERS, WHICH HAVE 3.50M API THDS TO A 30K MALE PULL TAB.

2.59-4 PIN CAP THD PROTECTOR = 111-081
2.59-4 BOX PLUG THD PROTECTOR = 110-863

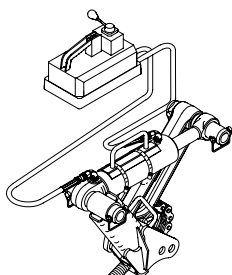
3.5-5 PIN CAP THD PROTECTOR = 110-933

2.875 API HIGH FLOW BEACON HOUSING BOX PLUG THD PROTECTOR = 369-426

2.63-6 EZ PIN CAP THD PROTECTOR = 369-345
2.63-6 EZ BOX PLUG THD PROTECTOR = 369-346

CONNECTOR 220-051 ALLOWS THE USE OF 86B, 86BH, AND 86BG IN AN 86BHL BEACON HOUSING.

040820



HYDRA-TONG
400-856



4.75" BIT BLOCK JAW
400-744

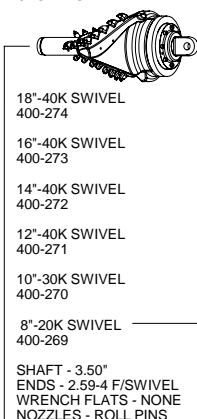


6.0" TALON WRENCH JAW
400-1139

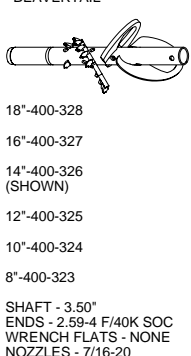
NOZZLE CHART

N1	N2	N3
{1/4 NPT}	{7/16-20}	{7/8-14}
SJ .070, 149-200 SJ .100, 149-201 SJ .150, 149-202 SJ .200, 149-203 SJ .250, 149-204	AJ .104, 159-291 DJ .104, 159-292 SJ .104, 159-293 PLUG, 159-294 AJ .157", 159-294 AJ .074, 159-295 DJ .074, 159-296 SJ .074, 159-297 AJ .156, 159-422 SJ .188, 159-423	AJ .209", 159-396 SJ .209", 159-397 PLUG, 159-398 AJ .157", 159-404 SJ .157", 159-405 AJ .104", 159-406 SJ .104", 159-407

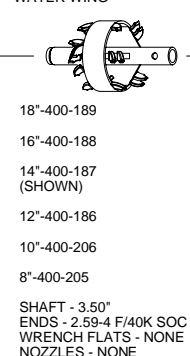
CAST FLUTED



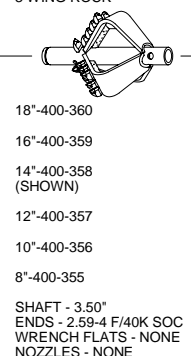
BEAVERTAIL



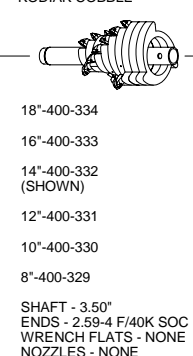
WATER WING



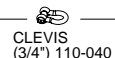
3 WING ROCK



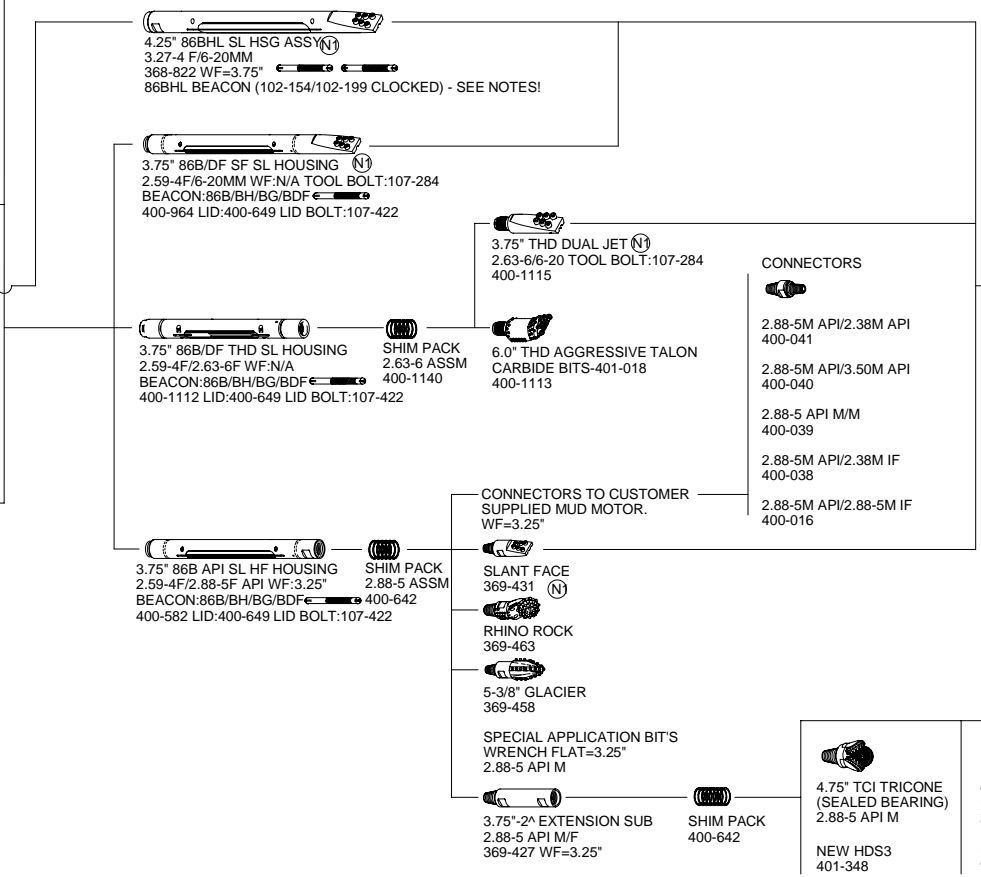
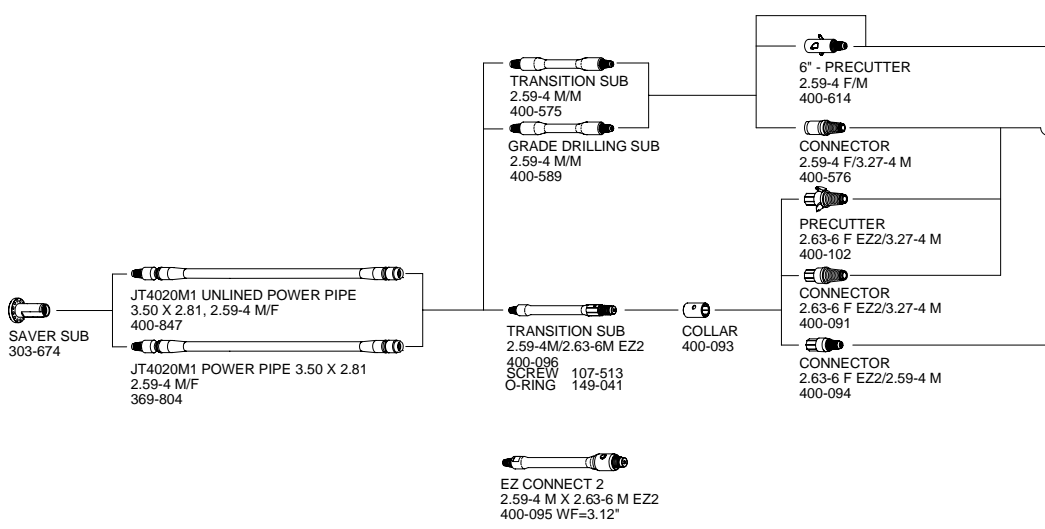
KODIAK COBBLE



USED TO PULL MULTIPLE REAMERS OR EXPANDERS.



- 185-917 PULLING GRIP (3/4"-1-1/4")
- 185-918 PULLING GRIP (1-1/4"-2")
- 185-919 PULLING GRIP (2"-2-3/4")
- 185-920 PULLING GRIP (2-3/4"-3-1/2")
- 185-921 PULLING GRIP (3-1/2"-4-1/4")
- 185-922 HD PULLING GRIP (3/4"-1-1/4")
- 185-923 HD PULLING GRIP (1-1/4"-2")
- 185-924 HD PULLING GRIP (2"-2-3/4")
- 185-925 HD PULLING GRIP (2-3/4"-3-1/2")
- 185-926 HD PULLING GRIP (3-1/2"-4-1/4")



CONNECTORS

- 2.88-5M API/2.38M API 400-041
- 2.88-5M API/3.50M API 400-040
- 2.88-5 API M/M 400-039
- 2.88-5M API/2.38M IF 400-038
- 2.88-5M API/2.88-5M IF 400-016

DURABIT	STEEP TAPER	TUFF BIT	BARRACUDA BIT	GRADE BIT	TORNADO BIT
7.8-6/20-1-00 368-984	7.8-6/20-1-00 369-494	8-6/20-1-10 369-743	7.8-6/20-1-10 369-508	5-6/20-1-00 400-022	5-6/20-1-00 400-1127
6.4-6/20-1-00 368-982	6.4-6/20-1-00 369-490	6.5-6/20-1-10 369-741	7.8-6/20-1-00 369-506	5-6/20-1-00 400-021	6-6/20-1-00 400-1129
5.2-6/20-1-00 368-980	5.2-6/20-1-00 369-486	5-6/20-1-10 369-739	6.4-6/20-1-10 369-504		
		ST TUFF BIT 6-6/20-1-10 400-431	6.4-6/20-1-00 369-502		
			5.2-6/20-1-10 369-500		
			5.2-6/20-1-00 369-498		

FLAT BIT NOMENCLATURE

3 - 5 / 12 - 50 - 00

BIT WIDTH	HOLE QTY.	BOLT SIZE	THICKNESS	BEND ANGLE
3"(76MM)	5	12(MM)	.50"(131MM)	0^
6"(152MM)	6	16(MM)	.75"(19MM)	10^
8"(203MM)	6	20(MM)	1"(25MM)	10^