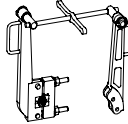


NOZZLE CHART

(N1)	(N2)	(N3)
(1/4 NPT)	(7/16-20)	(7/8-14)
SJ .070, 149-200 SJ .100, 149-201 SJ .150, 149-202 SJ .200, 149-203 SJ .250, 149-204	AJ .104, 159-291 DJ .104, 159-292 SJ .104, 159-293 PLUG, 159-294 AJ .074, 159-295 DJ .074, 159-296 SJ .074, 159-297 AJ .156, 159-422 SJ .188, 159-423	AJ .209, 159-396 SJ .209, 159-397 PLUG, 159-398 AJ .157, 159-404 SJ .157, 159-405 AJ .104, 159-406 SJ .104, 159-407



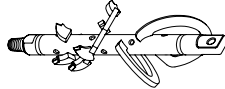
WRENCH JAWS



WRENCH SET  
0-3000 LB/FT  
369-297

1.24"	369-693
1.42"	369-281
1.56"	369-282
1.63"	369-692
2.35"	369-687

BEAVERTAIL

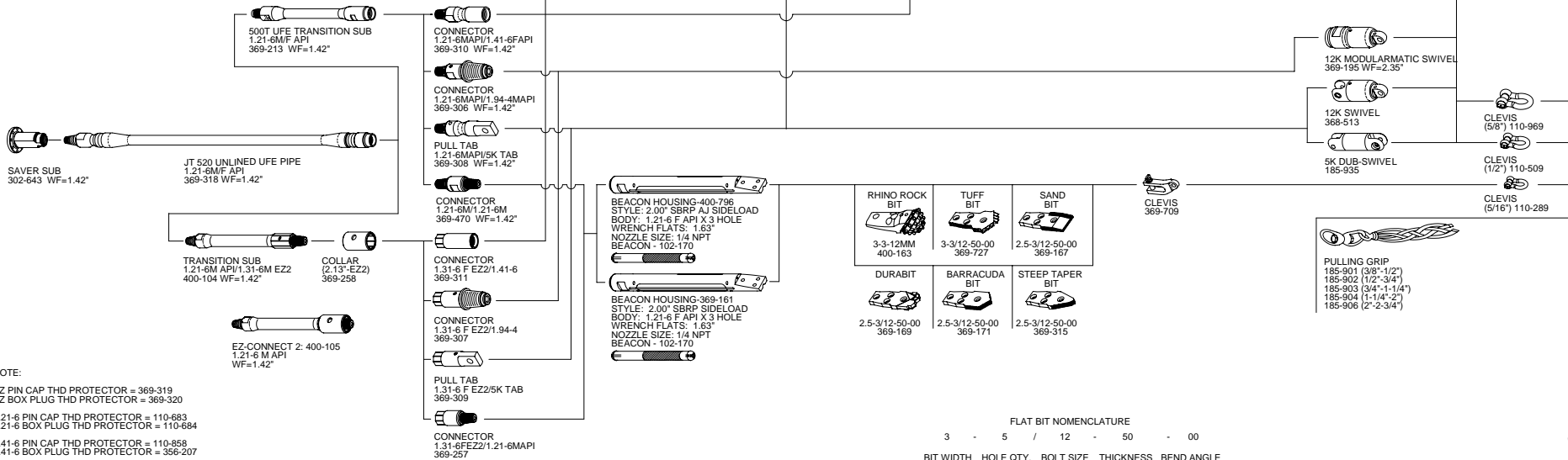


14"-368-548
12"-368-545
10"-368-542
8"-368-539 (PICTURED)
6"-368-536
4.5"-369-198
SHAFT: 2.00"
ENDS: 1.41-6M/12K TAB
WRENCH FLATS: 1.63"
NOZZLE SIZE: 7/16-20

COMPACT FLUTED



4.5"-357-696
SHAFT: NONE
ENDS: 1.41-6 M/12K SWIVEL
WRENCH FLATS: 1.24"
NOZZLE SIZE: 7/16-20



NOTE:

- EZ PIN CAP THD PROTECTOR = 369-319
- EZ BOX PLUG THD PROTECTOR = 369-320
- 1.21-6 PIN CAP THD PROTECTOR = 110-683
- 1.21-6 BOX PLUG THD PROTECTOR = 110-684
- 1.41-6 PIN CAP THD PROTECTOR = 110-858
- 1.41-6 BOX PLUG THD PROTECTOR = 356-207
- 1.94-4 PIN CAP THD PROTECTOR = 110-777
- 1.94-4 BOX PLUG THD PROTECTOR = 110-747

030509

FLAT BIT NOMENCLATURE

3	5	12	50	00
3"(76MM)	5	12(MM)	.50"(131MM)	0°
6"(152MM)	6	16(MM)	.75"(19MM)	10°
8"(203MM)	6	20(MM)	1"(25MM)	10°

JT520