

JT922

NOTES:
 *1.94-4 THREADS ARE INTERCHANGABLE WITH 2.06-4
 THREADS AND USE THE SAME THREAD PROTECTORS.

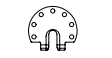
*1.94-4 CAP THREAD PROTECTOR:110-777
 1.94-4 PLUG THREAD PROTECTOR:110-747

*1.41-6 CAP THREAD PROTECTOR:110-858
 1.41-6 PLUG THREAD PROTECTOR:356-207

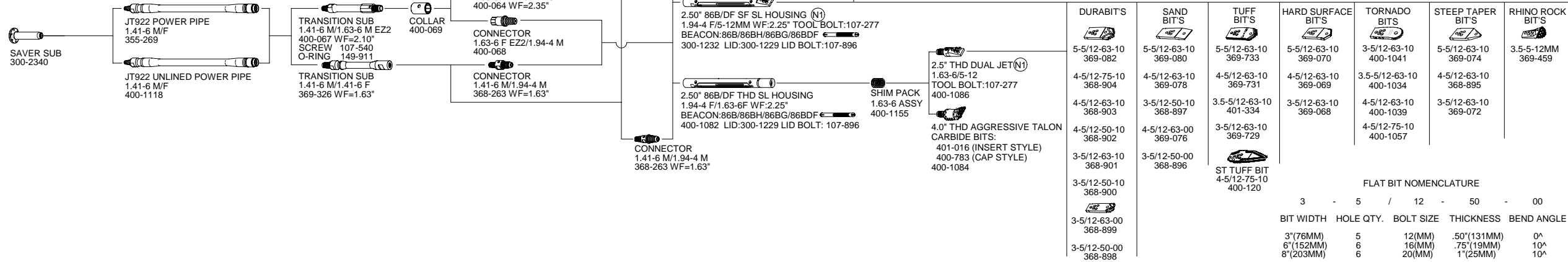
*1.63-6 EZZ CAP THREAD PROTECTOR: 111-092
 1.63-6 EZZ PLUG THREAD PROTECTOR: 111-093

NOZZLE CHART

N1	N2	N3
{1/4 NPT}	{7/16-20}	{7/8-14}
SJ .070, 149-200 SJ .100, 149-201 SJ .150, 149-202 SJ .200, 149-203 SJ .250, 149-204	AJ .104, 159-291 DJ .104, 159-292 SJ .104, 159-293 PLUG, 159-294 AJ .074, 159-295 DJ .074, 159-296 SJ .074, 159-297 AJ .156, 159-422 SJ .188, 159-423	AJ .209, 159-396 SJ .209, 159-397 PLUG, 159-398 AJ .157, 159-404 SJ .157, 159-405 AJ .104, 159-406 SJ .104, 159-407



- 1.24"-368-693
- 1.63"-368-692
- 2.00"-368-690
- 2.25"-368-688
- 2.35"-368-687



DURABIT'S	SAND BIT'S	TUFF BIT'S	HARD SURFACE BIT'S	TORNADO BIT'S	STEEP TAPER BIT'S	RHINO ROCK BIT'S
5-5/12-63-10 369-082	5-5/12-63-10 369-080	5-5/12-63-10 369-733	5-5/12-63-10 369-070	3-5/12-63-10 400-1041	5-5/12-63-10 369-074	3.5-5-12MM 369-459
4-5/12-75-10 368-904	4-5/12-63-10 369-078	4-5/12-63-10 369-731	4-5/12-63-10 369-069	3.5-5/12-63-10 400-1034	4-5/12-63-10 368-895	
4-5/12-63-10 368-903	3-5/12-50-10 368-897	3-5/12-63-10 401-334	3-5/12-63-10 369-068	4-5/12-63-10 400-1039	3-5/12-63-10 369-072	
4-5/12-50-10 368-902	4-5/12-63-00 369-076	3-5/12-63-10 369-729		4-5/12-75-10 400-1057		
3-5/12-63-10 368-901	3-5/12-50-00 368-896	ST TUFF BIT 4-5/12-75-10 400-120				
3-5/12-63-00 368-899						
3-5/12-50-00 368-898						

FLAT BIT NOMENCLATURE

BIT WIDTH	HOLE QTY.	BOLT SIZE	THICKNESS	BEND ANGLE
3"(76MM)	5	12(MM)	.50"(131MM)	0°
6"(152MM)	6	16(MM)	.75"(19MM)	10°
8"(203MM)	6	20(MM)	1"(25MM)	10°